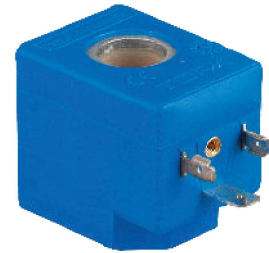


▶ COILS

**C40 STANDART COIL**

PROTECTION CLASS \_\_\_\_\_ IP65  
 VOLTAGE \_\_\_\_\_ 230VAC, 110VAC, 24VAC, 12VAC  
 24VDC, 12VDC



**C42 SERIES (WORKS UNDERWATER)**

PROTECTION CLASS \_\_\_\_\_ IP68  
 VOLTAGE \_\_\_\_\_ 230VAC, 110VAC, 24VAC, 12VAC  
 24VDC, 12VDC



**C20 SERIES MINI COIL**

PROTECTION CLASS \_\_\_\_\_ IP65  
 VOLTAGE \_\_\_\_\_ 230VAC, 110VAC, 24VAC, 12VAC  
 24VDC, 12VDC



**C30 SERIES**

PROTECTION CLASS \_\_\_\_\_ IP65  
 VOLTAGE \_\_\_\_\_ 230VAC, 110VAC, 24VAC, 12VAC  
 24VDC, 12VDC



It is preferred in practice will have a very long time energy.

**C43 SERIES**

PROTECTION CLASS \_\_\_\_\_ IP65  
 VOLTAGE \_\_\_\_\_ 24VDC, 12VDC

