

Heavy duty connector ○



- 6-48 Core side out
- 6-48 Core top out

— Nickel plating



# Professional Performance



Nickel plating



IP65 Water proof



Anti-rust and  
anti-corrosion





# IP65 WaterProof

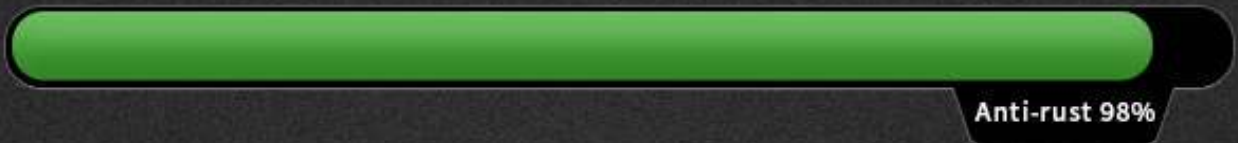
Safeguard For Electric



# NICKEL PLATING



Using nickel plating process



Galvanized products on the market





# Product parameters

## Heavy-duty connector

Voltage/Current: 500V/16A

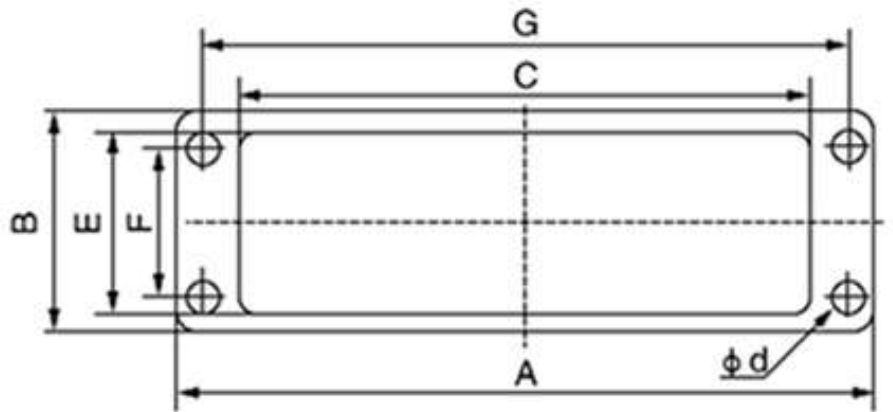
Surface: Silver-plated

Contact resistance:  $\leq 1\text{m}\Omega$

Cross section: 1.0-2.5mm<sup>2</sup> (AWG 18-14)

Tightening torque: 0.5Nm

Stripping length: 7mm



No.	PART NO.	Entry Side	Number of contact	A (mm)	B (mm)	C (mm)	D (mm)	E (mm)	F (mm)	G (mm)
1	WHE06C	Side entry	6	80.0	43.0	52.2	35.0	32.0	70.0	4.3
2	WHE06D	Top entry	6	80.0	43.0	52.2	35.0	32.0	70.0	4.3
3	WHE10C	Side entry	10	93.0	43.0	65.2	35.0	32.0	83.0	4.3
4	WHE10D	Top entry	10	93.0	43.0	65.2	35.0	32.0	83.0	4.3
5	WHE16C	Side entry	16	113.0	43.0	85.5	35.0	32.0	103.0	4.3
6	WHE16D	Top entry	16	113.0	43.0	85.5	35.0	32.0	103.0	4.3
7	WHE24C	Side entry	24	140.0	43.0	112.2	35.0	32.0	130.0	4.3
8	WHE24D	Top entry	24	140.0	43.0	112.2	35.0	32.0	130.0	4.3
9	WHE32C	Side entry	32	113.0	80.5	86.0	73.0	60.0	103.0	4.5
10	WHE32D	Top entry	32	113.0	80.5	86.0	73.0	60.0	103.0	4.5
11	WHE48C	Side entry	45	140.0	80.5	113.0	73.0	60.0	130.0	4.5
12	WHE48D	Top entry	45	140.0	80.5	113.0	73.0	60.0	130.0	4.5

Pameran produk

# Products Description

