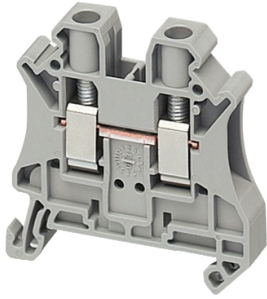


# Product data sheet

Specifications



Terminal block, Linergy TR, grey, 70mm<sup>2</sup>, passthrough, 2 points, set of 10

NSYTRV62

Product availability: Stock - Normally stocked in distribution facility

Price\*: 2.10 USD

## Main

Range	Linergy
Product name	Linergy TR
Product or Component Type	Terminal block
Device short name	TRV
accessory / separate part category	Connection accessory
Terminal block type	Passthrough
Terminal block level	1
Mounting Mode	Clip-on
Nominal cross section	0.009 in <sup>2</sup> (6 mm <sup>2</sup> )
Length	1.9 in (47.7 mm)
color	Gray
Quantity per Set	Set of 50

## Complementary

Width	0.3 in (8.2 mm)
Height	1.9 in (47.5 mm)
Connections - terminals	1 x screw terminal upstream M4) 1 x screw terminal downstream M4)
number of connections	2
Connection position	Sideways
Number of measurement input	2
Cable cross section	0.0003...0.02 in <sup>2</sup> (0.2...10 mm <sup>2</sup> ), solid with cable end 0.0003...0.009 in <sup>2</sup> (0.2...6 mm <sup>2</sup> ), flexible with cable end 0.0003...0.02 in <sup>2</sup> (0.2...10 mm <sup>2</sup> ), solid without cable end 0.0003...0.02 in <sup>2</sup> (0.2...10 mm <sup>2</sup> ), flexible without cable end
Tightening torque	13.3...15.9 lbf.in (1.5...1.8 N.m)
Wire stripping length	0.4 in (10 mm)
Tool type	Connection screwdriver Disconnection screwdriver
[Ue] rated operational voltage	1000 V EN/IEC 60947-7-1 600 V CSA 690 V ATEX Exe II Ex II 2 GD 600 V cURus

Price is "List Price" and may be subject to a trade discount – check with your local distributor or retailer for actual price.

<b>Line Rated Current</b>	41 A EN/IEC 60947-7-1 50 A cURus 50 A CSA 40 A ATEX Exe II Ex II 2 GD
<b>Material</b>	Polyamide 6/6: insulating case Copper alloy: connector and screw Copper alloy: commoning link Chromium-nickel steel: spring
<b>Dielectric loss</b>	0.01 at 1 MHz IEC 60250 0.01 at 1 MHz VDE 0303-T4
<b>Dielectric constant</b>	3.7 at 1 MHz
<b>Resistivity</b>	10000 MΩ.m IEC 60093 10000 MΩ.m VDE 0303-T30
<b>Surface resistance</b>	1000 GΩ IEC 60093 1000 GΩ VDE 0303-T30
<b>Creep resistance</b>	500 CTI (> 400 kB) IEC 60093 500 CTI (> 400 kB) VDE 0303-T30
<b>Flame retardance</b>	V0 0.03 in (0.8 mm) UL 94
<b>Net Weight</b>	0.49 oz (13.95 g)
<b>Range compatibility</b>	Prisma G Prisma P Prisma PH Prisma Pack Spacial Kaedra Pragma TeSys
<b>Product Compatibility</b>	Spacial enclosures

## Environment

<b>Product Certifications</b>	ATEX LR VDE GL DNV CSA cURus EAC IEC-Ex
<b>Dielectric strength</b>	1000 V IEC 60243-1
<b>Ambient air temperature for operation</b>	-40...266 °F (-40...130 °C) IEC 60216-1 -40...266 °F (-40...130 °C) VDE 0304-T21

## Ordering and shipping details

<b>Category</b>	US10CP521715
<b>Discount Schedule</b>	0CP5
<b>GTIN</b>	3606480532061
<b>Returnability</b>	Yes
<b>Country of origin</b>	MX

## Packing Units

<b>Unit Type of Package 1</b>	PCE
<b>Number of Units in Package 1</b>	1
<b>Package 1 Height</b>	0.315 in (0.800 cm)

<b>Package 1 Width</b>	1.850 in (4.700 cm)
<b>Package 1 Length</b>	1.890 in (4.800 cm)
<b>Package 1 Weight</b>	0.494 oz (14.000 g)
<b>Unit Type of Package 2</b>	BB1
<b>Number of Units in Package 2</b>	50
<b>Package 2 Height</b>	2.047 in (5.200 cm)
<b>Package 2 Width</b>	4.134 in (10.500 cm)
<b>Package 2 Length</b>	8.465 in (21.500 cm)
<b>Package 2 Weight</b>	25.750 oz (730.000 g)
<b>Unit Type of Package 3</b>	S06
<b>Number of Units in Package 3</b>	7000
<b>Package 3 Height</b>	29.528 in (75.000 cm)
<b>Package 3 Width</b>	23.622 in (60.000 cm)
<b>Package 3 Length</b>	31.496 in (80.000 cm)
<b>Package 3 Weight</b>	253.973 lb(US) (115.200 kg)

## Contractual warranty

<b>Warranty</b>	18 months
-----------------	-----------

## Sustainability

**Green Premium™ label** is Schneider Electric's commitment to delivering products with best-in-class environmental performance. Green Premium promises compliance with the latest regulations, transparency on environmental impacts, as well as circular and low-CO<sub>2</sub> products.

**Guide to assessing product sustainability** is a white paper that clarifies global eco-label standards and how to interpret environmental declarations.

[Learn more about Green Premium >](#)

[Guide to assess a product's sustainability >](#)



Transparency RoHS/REACH

## Well-being performance

✓ Mercury Free

✓ Rohs Exemption Information Yes

✓ Halogen Free Plastic Parts Product

## Certifications & Standards

Reach Regulation

[REACH Declaration](#)

Eu Rohs Directive

Compliant with Exemptions

China Rohs Regulation

[China RoHS declaration](#)

Product out of China RoHS scope. Substance declaration for your information.

Environmental Disclosure

[Product Environmental Profile](#)

Weee

The product must be disposed on European Union markets following specific waste collection and never end up in rubbish bins.

Circularity Profile

No need of specific recycling operations

California Proposition 65

WARNING: This product can expose you to chemicals including: Lead and lead compounds, which is known to the State of California to cause cancer and birth defects or other reproductive harm. For more information go to [www.P65Warnings.ca.gov](http://www.P65Warnings.ca.gov)