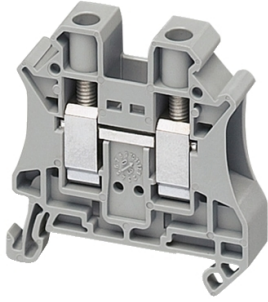


Product data sheet

Specifications



Terminal block, Linergy TR, grey, 10mm², passthrough, 2 points, set of 10

NSYTRV102

Product availability: Stock - Normally stocked in distribution facility

Price*: 2.70 USD

Main

Range	Linergy
Product name	Linergy TR
Product or Component Type	Terminal block
Device short name	TRV
accessory / separate part category	Connection accessory
Terminal block type	Passthrough
Terminal block level	1
Mounting Mode	Clip-on
Nominal cross section	0.02 in ² (10 mm ²)
Length	1.9 in (47.7 mm)
color	Gray
Quantity per Set	Set of 50

Complementary

Width	0.4 in (10.2 mm)
Height	1.9 in (47.5 mm)
Connections - terminals	1 x screw terminal upstream M4) 1 x screw terminal downstream M4)
number of connections	2
Connection position	Sideways
Number of measurement input	2
Cable cross section	0.0003...0.02 in ² (0.2...10 mm ²), solid with cable end 0.0003...0.02 in ² (0.2...10 mm ²), flexible with cable end 0.0008...0.02 in ² (0.5...16 mm ²), solid without cable end 0.0008...0.02 in ² (0.5...16 mm ²), flexible without cable end
Tightening torque	13.3...15.9 lbf.in (1.5...1.8 N.m)
Wire stripping length	0.4 in (10 mm)
Tool type	Connection screwdriver Disconnection screwdriver
[Ue] rated operational voltage	1000 V EN/IEC 60947-7-1 600 V CSA 690 V ATEX Exe II Ex II 2 GD 600 V cURus

Price is "List Price" and may be subject to a trade discount – check with your local distributor or retailer for actual price.

Line Rated Current	57 A EN/IEC 60947-7-1 65 A cURus 65 A CSA 54 A ATEX Exe II Ex II 2 GD
Material	Polyamide 6/6: insulating case Copper alloy: connector and screw Copper alloy: commoning link Chromium-nickel steel: spring
Dielectric loss	0.01 at 1 MHz IEC 60250 0.01 at 1 MHz VDE 0303-T4
Dielectric constant	3.7 at 1 MHz
Resistivity	10000 MΩ.m IEC 60093 10000 MΩ.m VDE 0303-T30
Surface resistance	1000 GΩ IEC 60093 1000 GΩ VDE 0303-T30
Creep resistance	500 CTI (> 400 kB) IEC 60093 500 CTI (> 400 kB) VDE 0303-T30
Flame retardance	V0 0.03 in (0.8 mm) UL 94
Net Weight	0.6 oz (18 g)
Range compatibility	Prisma G Prisma P Prisma PH Prisma Pack Spacial Kaedra Pragma TeSys
Product Compatibility	Spacial enclosures

Environment

Product Certifications	IEC-Ex LR VDE EAC DNV GL cURus ATEX CSA
Dielectric strength	1000 V IEC 60243-1
Ambient air temperature for operation	-40...266 °F (-40...130 °C) IEC 60216-1 -40...266 °F (-40...130 °C) VDE 0304-T21

Ordering and shipping details

Category	US10CP521715
Discount Schedule	0CP5
GTIN	3606480532092
Returnability	Yes
Country of origin	DE

Packing Units

Unit Type of Package 1	PCE
Number of Units in Package 1	1
Package 1 Height	2.165 in (5.500 cm)

Package 1 Width	3.937 in (10.000 cm)
Package 1 Length	10.236 in (26.000 cm)
Package 1 Weight	0.600 oz (17.000 g)
Unit Type of Package 2	BB1
Number of Units in Package 2	50
Package 2 Height	1.969 in (5.000 cm)
Package 2 Width	4.094 in (10.400 cm)
Package 2 Length	10.433 in (26.500 cm)
Package 2 Weight	31.358 oz (889.000 g)
Unit Type of Package 3	S06
Number of Units in Package 3	5000
Package 3 Height	29.528 in (75.000 cm)
Package 3 Width	23.622 in (60.000 cm)
Package 3 Length	31.496 in (80.000 cm)
Package 3 Weight	225.313 lb(US) (102.200 kg)

Contractual warranty

Warranty	18 months
-----------------	-----------

Sustainability

Green Premium™ label is Schneider Electric's commitment to delivering products with best-in-class environmental performance. Green Premium promises compliance with the latest regulations, transparency on environmental impacts, as well as circular and low-CO₂ products.

Guide to assessing product sustainability is a white paper that clarifies global eco-label standards and how to interpret environmental declarations.

[Learn more about Green Premium >](#)


[Guide to assess a product's sustainability >](#)



Transparency RoHS/REACH

Well-being performance

 Mercury Free

 RoHS Exemption Information Yes

 Halogen Free Plastic Parts Product

Certifications & Standards

Reach Regulation

[REACH Declaration](#)

Eu RoHS Directive

Compliant with Exemptions

China RoHS Regulation

[China RoHS declaration](#)

Product out of China RoHS scope. Substance declaration for your information.

Environmental Disclosure

[Product Environmental Profile](#)

Weee

The product must be disposed on European Union markets following specific waste collection and never end up in rubbish bins.

Circularity Profile

No need of specific recycling operations

California Proposition 65

WARNING: This product can expose you to chemicals including: Lead and lead compounds, which is known to the State of California to cause cancer and birth defects or other reproductive harm. For more information go to www.P65Warnings.ca.gov