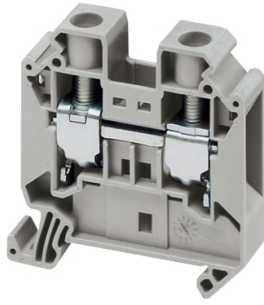


Product data sheet

Specifications



Terminal block, Linergy TR, grey, 16mm², passthrough, 2 points, set of 10

NSYTRV162

Product availability: Stock - Normally stocked in distribution facility

Price*: 5.40 USD

Main

Range	Linergy
Product name	Linergy TR
Product or Component Type	Terminal block
Device short name	TRV
accessory / separate part category	Connection accessory
Terminal block type	Passthrough
Terminal block level	1
Mounting Mode	Clip-on
Nominal cross section	0.02 in ² (16 mm ²)
Length	2.2 in (55.5 mm)
color	Gray
Quantity per Set	Set of 50

Complementary

Width	0.5 in (12.2 mm)
Height	2.2 in (55 mm)
Connections - terminals	1 x screw terminal upstream M5) 1 x screw terminal downstream M5)
number of connections	2
Connection position	Sideways
Number of measurement input	2
Cable cross section	0.0003...0.02 in ² (0.2...10 mm ²), flexible with cable end 0.0003...0.02 in ² (0.2...16 mm ²), solid with cable end 0.002...0.04 in ² (1.5...25 mm ²), solid without cable end 0.002...0.04 in ² (1.5...25 mm ²), flexible without cable end
Tightening torque	22.1...26.6 lbf.in (2.5...3 N.m)
Wire stripping length	0.6 in (14 mm)
Tool type	Connection screwdriver Disconnection screwdriver
[Ue] rated operational voltage	1000 V EN/IEC 60947-7-1 600 V CSA 690 V ATEX Exe II Ex II 2 GD 600 V cURus

Price is "List Price" and may be subject to a trade discount – check with your local distributor or retailer for actual price.

Line Rated Current	76 A EN/IEC 60947-7-1 85 A cURus 85 A CSA 73 A ATEX Exe II Ex II 2 GD
Material	Polyamide 6/6: insulating case Copper alloy: connector and screw Copper alloy: commoning link Chromium-nickel steel: spring
Dielectric loss	0.01 at 1 MHz IEC 60250 0.01 at 1 MHz VDE 0303-T4
Dielectric constant	3.7 at 1 MHz
Resistivity	10000 MΩ.m IEC 60093 10000 MΩ.m VDE 0303-T30
Surface resistance	1000 GΩ IEC 60093 1000 GΩ VDE 0303-T30
Creep resistance	500 CTI (> 400 kB) IEC 60093 500 CTI (> 400 kB) VDE 0303-T30
Flame retardance	V0 0.03 in (0.8 mm) UL 94
Net Weight	1.06 oz (30 g)
Range compatibility	Prisma G Prisma P Prisma PH Prisma Pack Spacial Kaedra Pragma TeSys
Product Compatibility	Spacial enclosures

Environment

Product Certifications	DNV VDE IEC-Ex LR GL cURus CSA EAC ATEX
Dielectric strength	1000 V IEC 60243-1
Ambient air temperature for operation	-40...266 °F (-40...130 °C) IEC 60216-1 -40...266 °F (-40...130 °C) VDE 0304-T21

Ordering and shipping details

Category	US10CP521715
Discount Schedule	0CP5
GTIN	3606480532122
Returnability	Yes
Country of origin	TR

Packing Units

Unit Type of Package 1	PCE
Number of Units in Package 1	1
Package 1 Height	0.472 in (1.200 cm)

Package 1 Width	2.165 in (5.500 cm)
Package 1 Length	2.165 in (5.500 cm)
Package 1 Weight	1.023 oz (29.000 g)
Unit Type of Package 2	BB1
Number of Units in Package 2	50
Package 2 Height	3.740 in (9.500 cm)
Package 2 Width	4.528 in (11.500 cm)
Package 2 Length	14.173 in (36.000 cm)
Package 2 Weight	3.411 lb(US) (1.547 kg)
Unit Type of Package 3	P06
Number of Units in Package 3	2400
Package 3 Height	29.528 in (75.000 cm)
Package 3 Width	23.622 in (60.000 cm)
Package 3 Length	31.496 in (80.000 cm)
Package 3 Weight	192.896 lb(US) (87.496 kg)

Contractual warranty

Warranty	18 months
-----------------	-----------

Sustainability

Green Premium™ label is Schneider Electric's commitment to delivering products with best-in-class environmental performance. Green Premium promises compliance with the latest regulations, transparency on environmental impacts, as well as circular and low-CO₂ products.

Guide to assessing product sustainability is a white paper that clarifies global eco-label standards and how to interpret environmental declarations.

[Learn more about Green Premium >](#)

[Guide to assess a product's sustainability >](#)



Transparency RoHS/REACH

Well-being performance

✓ Reach Free Of Svhc

✓ Toxic Heavy Metal Free

✓ Mercury Free

✓ Rohs Exemption Information Yes

✓ Halogen Free Plastic Parts Product

Certifications & Standards

Reach Regulation [REACH Declaration](#)

Eu Rohs Directive Compliant
[EU RoHS Declaration](#)

China Rohs Regulation [China RoHS declaration](#)
Pro-active China RoHS declaration (out of China RoHS legal scope)

Environmental Disclosure [Product Environmental Profile](#)

Weee The product must be disposed on European Union markets following specific waste collection and never end up in rubbish bins.

Circularity Profile No need of specific recycling operations