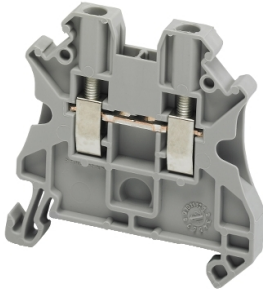


# Product data sheet

Specifications



## Terminal block, Linergy TR, grey, 2.5mm<sup>2</sup>, passthrough, 2 points, set of 10

NSYTRV22

Product availability: Stock - Normally stocked in distribution facility

Price\*: 1.40 USD

### Main

Range	Linergy
Product name	Linergy TR
Product or Component Type	Terminal block
Device short name	TRV
accessory / separate part category	Connection accessory
Terminal block type	Passthrough
Terminal block level	1
Mounting Mode	Clip-on
Nominal cross section	0.004 in <sup>2</sup> (2.5 mm <sup>2</sup> )
Length	1.9 in (47.7 mm)
color	Gray
Quantity per Set	Set of 50

### Complementary

Width	0.2 in (5.2 mm)
Height	1.9 in (47.5 mm)
Connections - terminals	1 x screw terminal upstream M3) 1 x screw terminal downstream M3)
number of connections	2
Connection position	Sideways
Number of measurement input	2
Cable cross section	0.0002...0.006 in <sup>2</sup> (0.14...4 mm <sup>2</sup> ), solid with cable end 0.0003...0.004 in <sup>2</sup> (0.2...2.5 mm <sup>2</sup> ), flexible with cable end 0.0002...0.006 in <sup>2</sup> (0.14...4 mm <sup>2</sup> ), solid without cable end 0.0002...0.006 in <sup>2</sup> (0.14...4 mm <sup>2</sup> ), flexible without cable end
Tightening torque	4.4...5.3 lbf.in (0.5...0.6 N.m)
Wire stripping length	0.4 in (9 mm)
Tool type	Connection screwdriver Disconnection screwdriver
[Ue] rated operational voltage	1000 V EN/IEC 60947-7-1 600 V CSA 690 V ATEX Exe II Ex II 2 GD 600 V cURus

Price is "List Price" and may be subject to a trade discount – check with your local distributor or retailer for actual price.

<b>Line Rated Current</b>	24 A EN/IEC 60947-7-1 22 A ATEX Exe II Ex II 2 GD 20 A cURus 20 A CSA
<b>Material</b>	Polyamide 6/6: insulating case Copper alloy: connector and screw Copper alloy: commoning link Chromium-nickel steel: spring
<b>Dielectric loss</b>	0.01 at 1 MHz IEC 60250 0.01 at 1 MHz VDE 0303-T4
<b>Dielectric constant</b>	3.7 at 1 MHz
<b>Resistivity</b>	10000 M $\Omega$ .m IEC 60093 10000 M $\Omega$ .m VDE 0303-T30
<b>Surface resistance</b>	1000 G $\Omega$ IEC 60093 1000 G $\Omega$ VDE 0303-T30
<b>Creep resistance</b>	500 CTI (> 400 kV) IEC 60093 500 CTI (> 400 kV) VDE 0303-T30
<b>Flame retardance</b>	V0 0.03 in (0.8 mm) UL 94
<b>Net Weight</b>	0.3 oz (8.2 g)
<b>Range compatibility</b>	Prisma G Prisma P Prisma PH Prisma Pack Spacial Kaedra Pragma TeSys Thalassa Thalassa TBP Thalassa Thalassa TBS
<b>Product Compatibility</b>	Spacial enclosures

## Environment

<b>Product Certifications</b>	LR EAC VDE cURus DNV CSA IEC-Ex ATEX GL
<b>Dielectric strength</b>	1000 V IEC 60243-1
<b>Ambient air temperature for operation</b>	-40...266 °F (-40...130 °C) IEC 60216-1 -40...266 °F (-40...130 °C) VDE 0304-T21

## Ordering and shipping details

<b>Category</b>	US10CP521715
<b>Discount Schedule</b>	0CP5
<b>GTIN</b>	3606480531798
<b>Returnability</b>	Yes
<b>Country of origin</b>	FR

## Packing Units

<b>Unit Type of Package 1</b>	PCE
<b>Number of Units in Package 1</b>	1

<b>Package 1 Height</b>	0.276 in (0.700 cm)
<b>Package 1 Width</b>	1.890 in (4.800 cm)
<b>Package 1 Length</b>	1.890 in (4.800 cm)
<b>Package 1 Weight</b>	0.247 oz (7.000 g)
<b>Unit Type of Package 2</b>	BB1
<b>Number of Units in Package 2</b>	50
<b>Package 2 Height</b>	2.165 in (5.500 cm)
<b>Package 2 Width</b>	2.362 in (6.000 cm)
<b>Package 2 Length</b>	10.630 in (27.000 cm)
<b>Package 2 Weight</b>	13.968 oz (396.000 g)
<b>Unit Type of Package 3</b>	S06
<b>Number of Units in Package 3</b>	12100
<b>Package 3 Height</b>	29.528 in (75.000 cm)
<b>Package 3 Width</b>	23.622 in (60.000 cm)
<b>Package 3 Length</b>	31.496 in (80.000 cm)
<b>Package 3 Weight</b>	239.934 lb(US) (108.832 kg)

## Contractual warranty

<b>Warranty</b>	18 months
-----------------	-----------

## Sustainability

**Green Premium™ label** is Schneider Electric's commitment to delivering products with best-in-class environmental performance. Green Premium promises compliance with the latest regulations, transparency on environmental impacts, as well as circular and low-CO<sub>2</sub> products.

**Guide to assessing product sustainability** is a white paper that clarifies global eco-label standards and how to interpret environmental declarations.

[Learn more about Green Premium >](#)

[Guide to assess a product's sustainability >](#)



Transparency RoHS/REACH

## Well-being performance

 Mercury Free

 RoHS Exemption Information Yes

 Halogen Free Plastic Parts Product

## Certifications & Standards

**Reach Regulation** [REACH Declaration](#)

**Eu RoHS Directive** Compliant with Exemptions

**China RoHS Regulation** [China RoHS declaration](#)  
Product out of China RoHS scope. Substance declaration for your information.

**Environmental Disclosure** [Product Environmental Profile](#)

**Weee** The product must be disposed on European Union markets following specific waste collection and never end up in rubbish bins.

**Circularity Profile** No need of specific recycling operations

**California Proposition 65** WARNING: This product can expose you to chemicals including: Lead and lead compounds, which is known to the State of California to cause cancer and birth defects or other reproductive harm. For more information go to [www.P65Warnings.ca.gov](http://www.P65Warnings.ca.gov)