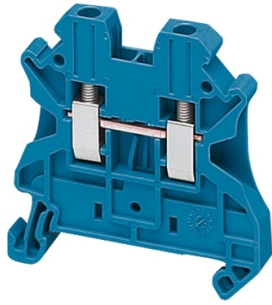


Product data sheet

Specifications



Terminal block, Linergy TR, blue, 2.5mm², passthrough, 2 points, set of 10

NSYTRV22BL

Product availability: Stock - Normally stocked in distribution facility

Price*: 1.40 USD

Main

| | |
|------------------------------------|--|
| Range | Linergy |
| Product name | Linergy TR |
| Product or Component Type | Terminal block |
| Device short name | TRV |
| accessory / separate part category | Connection accessory |
| Terminal block type | Passthrough |
| Terminal block level | 1 |
| Mounting Mode | Clip-on |
| Nominal cross section | 0.004 in ² (2.5 mm ²) |
| Length | 1.9 in (47.7 mm) |
| color | Blue |
| Quantity per Set | Set of 50 |

Complementary

| | |
|--------------------------------|---|
| Width | 0.2 in (5.2 mm) |
| Height | 1.9 in (47.5 mm) |
| Connections - terminals | 1 x screw terminal upstream M3) 1 x screw terminal downstream M3) |
| number of connections | 2 |
| Connection position | Sideways |
| Number of measurement input | 2 |
| Cable cross section | 0.0002...0.006 in ² (0.14...4 mm ²), solid with cable end 0.0003...0.004 in ² (0.2...2.5 mm ²), flexible with cable end 0.0002...0.006 in ² (0.14...4 mm ²), solid without cable end 0.0002...0.006 in ² (0.14...4 mm ²), flexible without cable end |
| Tightening torque | 4.4...5.3 lbf.in (0.5...0.6 N.m) |
| Wire stripping length | 0.4 in (9 mm) |
| Tool type | Connection screwdriver Disconnection screwdriver |
| [Ue] rated operational voltage | 1000 V EN/IEC 60947-7-1 600 V CSA 690 V ATEX Exe II Ex II 2 GD 600 V cURus |

Price is "List Price" and may be subject to a trade discount – check with your local distributor or retailer for actual price.

| | |
|------------------------------|--|
| Line Rated Current | 24 A EN/IEC 60947-7-1 22 A ATEX Exe II Ex II 2 GD 20 A cURus 20 A CSA |
| Material | Polyamide 6/6: insulating case Copper alloy: connector and screw Copper alloy: commoning link Chromium-nickel steel: spring |
| Dielectric loss | 0.01 at 1 MHz IEC 60250 0.01 at 1 MHz VDE 0303-T4 |
| Dielectric constant | 3.7 at 1 MHz |
| Resistivity | 10000 MΩ.m IEC 60093 10000 MΩ.m VDE 0303-T30 |
| Surface resistance | 1000 GΩ IEC 60093 1000 GΩ VDE 0303-T30 |
| Creep resistance | 500 CTI (> 400 kV) IEC 60093 500 CTI (> 400 kV) VDE 0303-T30 |
| Flame retardance | V0 0.03 in (0.8 mm) UL 94 |
| Net Weight | 0.3 oz (8.2 g) |
| Range compatibility | Prisma G Prisma P Prisma PH Prisma Pack Spacial Kaedra Pragma TeSys Thalassa Thalassa TBP Thalassa Thalassa TBS |
| Product Compatibility | Spacial enclosures |

Environment

| | |
|--|---|
| Product Certifications | IEC-Ex DNV GL ATEX VDE CSA cURus EAC LR |
| Dielectric strength | 1000 V IEC 60243-1 |
| Ambient air temperature for operation | -40...266 °F (-40...130 °C) IEC 60216-1 -40...266 °F (-40...130 °C) VDE 0304-T21 |

Ordering and shipping details

| | |
|--------------------------|---------------|
| Category | US10CP521715 |
| Discount Schedule | 0CP5 |
| GTIN | 3606480531804 |
| Returnability | Yes |
| Country of origin | DE |

Packing Units

| | |
|-------------------------------------|-----|
| Unit Type of Package 1 | PCE |
| Number of Units in Package 1 | 1 |

| | |
|-------------------------------------|---------------------------|
| Package 1 Height | 2.0 in (5 cm) |
| Package 1 Width | 2.8 in (7 cm) |
| Package 1 Length | 10.04 in (25.5 cm) |
| Package 1 Weight | 0.2 oz (7 g) |
| Unit Type of Package 2 | BB1 |
| Number of Units in Package 2 | 50 |
| Package 2 Height | 2.0 in (5 cm) |
| Package 2 Width | 2.8 in (7 cm) |
| Package 2 Length | 10.04 in (25.5 cm) |
| Package 2 Weight | 13.9 oz (395 g) |
| Unit Type of Package 3 | S03 |
| Number of Units in Package 3 | 1350 |
| Package 3 Height | 11.8 in (30 cm) |
| Package 3 Width | 11.8 in (30 cm) |
| Package 3 Length | 15.7 in (40 cm) |
| Package 3 Weight | 24.599 lb(US) (11.158 kg) |

Contractual warranty

| | |
|-----------------|-----------|
| Warranty | 18 months |
|-----------------|-----------|

Sustainability

Green Premium™ label is Schneider Electric's commitment to delivering products with best-in-class environmental performance. Green Premium promises compliance with the latest regulations, transparency on environmental impacts, as well as circular and low-CO₂ products.

Guide to assessing product sustainability is a white paper that clarifies global eco-label standards and how to interpret environmental declarations.

[Learn more about Green Premium >](#)

[Guide to assess a product's sustainability >](#)



Transparency RoHS/REACH

Well-being performance

 Mercury Free

 Rohs Exemption Information Yes

 Halogen Free Plastic Parts Product

Certifications & Standards

Reach Regulation [REACH Declaration](#)

Eu Rohs Directive Compliant with Exemptions

China Rohs Regulation [China RoHS declaration](#)
Product out of China RoHS scope. Substance declaration for your information.

Environmental Disclosure [Product Environmental Profile](#)

Weee The product must be disposed on European Union markets following specific waste collection and never end up in rubbish bins.

Circularity Profile No need of specific recycling operations

California Proposition 65 WARNING: This product can expose you to chemicals including: Lead and lead compounds, which is known to the State of California to cause cancer and birth defects or other reproductive harm. For more information go to www.P65Warnings.ca.gov