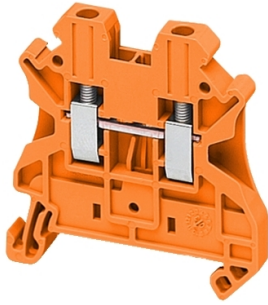


# Product data sheet

Specifications



## Terminal block, Linergy TR, orange, 2.5mm<sup>2</sup>, passthrough, 2 points, set of 10

NSYTRV22AR

Product availability: Non-Stock - Not normally stocked in distribution facility

! Discontinued

### Main

Range	Linergy
Product name	Linergy TR
Product or Component Type	Terminal block
Device short name	TRV
accessory / separate part category	Connection accessory
Terminal block type	Passthrough
Terminal block level	1
Mounting Mode	Clip-on
Nominal cross section	0.004 in <sup>2</sup> (2.5 mm <sup>2</sup> )
Length	1.9 in (47.7 mm)
color	Orange
Quantity per Set	Set of 50

### Complementary

Width	0.2 in (5.2 mm)
Height	1.9 in (47.5 mm)
Connections - terminals	1 x screw terminal upstream M3) 1 x screw terminal downstream M3)
number of connections	2
Connection position	Sideways
Number of measurement input	2
Cable cross section	0.0002...0.006 in <sup>2</sup> (0.14...4 mm <sup>2</sup> ), solid with cable end 0.0003...0.004 in <sup>2</sup> (0.2...2.5 mm <sup>2</sup> ), flexible with cable end 0.0002...0.006 in <sup>2</sup> (0.14...4 mm <sup>2</sup> ), solid without cable end 0.0002...0.006 in <sup>2</sup> (0.14...4 mm <sup>2</sup> ), flexible without cable end
Tightening torque	4.4...5.3 lbf.in (0.5...0.6 N.m)
Wire stripping length	0.4 in (9 mm)
Tool type	Connection screwdriver Disconnection screwdriver
[Ue] rated operational voltage	1000 V EN/IEC 60947-7-1 600 V CSA 690 V ATEX Exe II Ex II 2 GD 600 V cURus

Price is "List Price" and may be subject to a trade discount – check with your local distributor or retailer for actual price.

<b>Line Rated Current</b>	24 A EN/IEC 60947-7-1 22 A ATEX Exe II Ex II 2 GD 20 A cURus 20 A CSA
<b>Material</b>	Polyamide 6/6: insulating case Copper alloy: connector and screw Copper alloy: commoning link Chromium-nickel steel: spring
<b>Dielectric loss</b>	0.01 at 1 MHz IEC 60250 0.01 at 1 MHz VDE 0303-T4
<b>Dielectric constant</b>	3.7 at 1 MHz
<b>Resistivity</b>	10000 MΩ.m IEC 60093 10000 MΩ.m VDE 0303-T30
<b>Surface resistance</b>	1000 GΩ IEC 60093 1000 GΩ VDE 0303-T30
<b>Creep resistance</b>	500 CTI (> 400 kB) IEC 60093 500 CTI (> 400 kB) VDE 0303-T30
<b>Flame retardance</b>	V0 0.03 in (0.8 mm) UL 94
<b>Net Weight</b>	0.3 oz (8.2 g)
<b>Range compatibility</b>	Prisma G Prisma P Prisma PH Prisma Pack Spacial Kaedra Pragma TeSys
<b>Product Compatibility</b>	Spacial enclosures

## Environment

<b>Product Certifications</b>	DNV cURus ATEX IEC-Ex CSA VDE GL LR EAC
<b>Dielectric strength</b>	1000 V IEC 60243-1
<b>Ambient air temperature for operation</b>	-40...266 °F (-40...130 °C) IEC 60216-1 -40...266 °F (-40...130 °C) VDE 0304-T21

## Ordering and shipping details

<b>Category</b>	US10CP521715
<b>Discount Schedule</b>	0CP5
<b>GTIN</b>	3606480531811
<b>Returnability</b>	No
<b>Country of origin</b>	DE

## Packing Units

<b>Unit Type of Package 1</b>	PCE
<b>Number of Units in Package 1</b>	1
<b>Package 1 Height</b>	2.0 in (5 cm)

<b>Package 1 Width</b>	2.8 in (7 cm)
<b>Package 1 Length</b>	10.0 in (25.3 cm)
<b>Package 1 Weight</b>	0.2 oz (7 g)
<b>Unit Type of Package 2</b>	BB1
<b>Number of Units in Package 2</b>	50
<b>Package 2 Height</b>	2.0 in (5 cm)
<b>Package 2 Width</b>	2.8 in (7 cm)
<b>Package 2 Length</b>	10.0 in (25.3 cm)
<b>Package 2 Weight</b>	14.04 oz (398 g)
<b>Unit Type of Package 3</b>	S03
<b>Number of Units in Package 3</b>	1350
<b>Package 3 Height</b>	11.8 in (30 cm)
<b>Package 3 Width</b>	11.8 in (30 cm)
<b>Package 3 Length</b>	15.7 in (40 cm)
<b>Package 3 Weight</b>	24.762 lb(US) (11.232 kg)

## Contractual warranty

<b>Warranty</b>	18 months
-----------------	-----------

## Sustainability

**Green Premium™ label** is Schneider Electric's commitment to delivering products with best-in-class environmental performance. Green Premium promises compliance with the latest regulations, transparency on environmental impacts, as well as circular and low-CO<sub>2</sub> products.

**Guide to assessing product sustainability** is a white paper that clarifies global eco-label standards and how to interpret environmental declarations.

[Learn more about Green Premium >](#)

[Guide to assess a product's sustainability >](#)



Transparency RoHS/REACH

## Well-being performance

 Mercury Free

 Rohs Exemption Information Yes

 Halogen Free Plastic Parts Product

## Certifications & Standards

**Reach Regulation** [REACH Declaration](#)

**Eu Rohs Directive** Compliant with Exemptions

**China Rohs Regulation** [China RoHS declaration](#)  
Product out of China RoHS scope. Substance declaration for your information.

**Environmental Disclosure** [Product Environmental Profile](#)

**Weee** The product must be disposed on European Union markets following specific waste collection and never end up in rubbish bins.

**Circularity Profile** No need of specific recycling operations

**California Proposition 65** WARNING: This product can expose you to chemicals including: Lead and lead compounds, which is known to the State of California to cause cancer and birth defects or other reproductive harm. For more information go to [www.P65Warnings.ca.gov](http://www.P65Warnings.ca.gov)