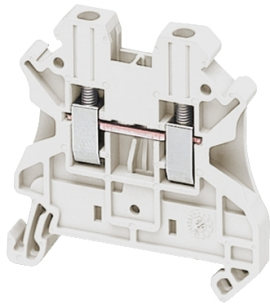


Product data sheet

Specifications



Terminal block, Linergy TR, white, 2.5mm², passthrough, 2 points, set of 10

NSYTRV22WH

Product availability: Stock - Normally stocked in distribution facility

Price*: 1.40 USD

Main

Range	Linergy
Product name	Linergy TR
Product or Component Type	Terminal block
Device short name	TRV
accessory / separate part category	Connection accessory
Terminal block type	Passthrough
Terminal block level	1
Mounting Mode	Clip-on
Nominal cross section	0.004 in ² (2.5 mm ²)
Length	1.9 in (47.7 mm)
color	White
Quantity per Set	Set of 50

Complementary

Width	0.2 in (5.2 mm)
Height	1.9 in (47.5 mm)
Connections - terminals	1 x screw terminal upstream M3) 1 x screw terminal downstream M3)
number of connections	2
Connection position	Sideways
Number of measurement input	2
Cable cross section	0.0002...0.006 in ² (0.14...4 mm ²), solid with cable end 0.0003...0.004 in ² (0.2...2.5 mm ²), flexible with cable end 0.0002...0.006 in ² (0.14...4 mm ²), solid without cable end 0.0002...0.006 in ² (0.14...4 mm ²), flexible without cable end
Tightening torque	4.4...5.3 lbf.in (0.5...0.6 N.m)
Wire stripping length	0.4 in (9 mm)
Tool type	Connection screwdriver Disconnection screwdriver
[Ue] rated operational voltage	1000 V EN/IEC 60947-7-1 600 V CSA 690 V ATEX Exe II Ex II 2 GD 600 V cURus

Price is "List Price" and may be subject to a trade discount – check with your local distributor or retailer for actual price.

Line Rated Current	24 A EN/IEC 60947-7-1 22 A ATEX Exe II Ex II 2 GD 20 A cURus 20 A CSA
Material	Polyamide 6/6: insulating case Copper alloy: connector and screw Copper alloy: commoning link Chromium-nickel steel: spring
Dielectric loss	0.01 at 1 MHz IEC 60250 0.01 at 1 MHz VDE 0303-T4
Dielectric constant	3.7 at 1 MHz
Resistivity	10000 M Ω .m IEC 60093 10000 M Ω .m VDE 0303-T30
Surface resistance	1000 G Ω IEC 60093 1000 G Ω VDE 0303-T30
Creep resistance	500 CTI (> 400 kB) IEC 60093 500 CTI (> 400 kB) VDE 0303-T30
Flame retardance	V0 0.03 in (0.8 mm) UL 94
Net Weight	0.3 oz (8.2 g)
Range compatibility	Prisma G Prisma P Prisma PH Prisma Pack Spacial Kaedra Pragma TeSys
Product Compatibility	Spacial enclosures

Environment

Product Certifications	ATEX IEC-Ex DNV EAC GL LR CSA VDE cURus
Dielectric strength	1000 V IEC 60243-1
Ambient air temperature for operation	-40...266 °F (-40...130 °C) IEC 60216-1 -40...266 °F (-40...130 °C) VDE 0304-T21

Ordering and shipping details

Category	US10CP521715
Discount Schedule	0CP5
GTIN	3606480531835
Returnability	Yes
Country of origin	US

Packing Units

Unit Type of Package 1	PCE
Number of Units in Package 1	1
Package 1 Height	1.969 in (5.000 cm)

Package 1 Width	2.677 in (6.800 cm)
Package 1 Length	10.0000000000 in (25.400 cm)
Package 1 Weight	0.247 oz (7.000 g)
Unit Type of Package 2	BB1
Number of Units in Package 2	50
Package 2 Height	1.969 in (5.000 cm)
Package 2 Width	2.677 in (6.800 cm)
Package 2 Length	10.0000000000 in (25.400 cm)
Package 2 Weight	13.898 oz (394.000 g)
Unit Type of Package 3	S03
Number of Units in Package 3	1350
Package 3 Height	11.811 in (30.000 cm)
Package 3 Width	11.811 in (30.000 cm)
Package 3 Length	15.748 in (40.000 cm)
Package 3 Weight	24.553 lb(US) (11.137 kg)

Contractual warranty

Warranty	18 months
-----------------	-----------

Sustainability

Green Premium™ label is Schneider Electric's commitment to delivering products with best-in-class environmental performance. Green Premium promises compliance with the latest regulations, transparency on environmental impacts, as well as circular and low-CO₂ products.

Guide to assessing product sustainability is a white paper that clarifies global eco-label standards and how to interpret environmental declarations.

[Learn more about Green Premium >](#)

[Guide to assess a product's sustainability >](#)



Transparency RoHS/REACH

Well-being performance

 Mercury Free

 Rohs Exemption Information Yes

 Halogen Free Plastic Parts Product

Certifications & Standards

Reach Regulation [REACH Declaration](#)

Eu Rohs Directive Compliant with Exemptions

China Rohs Regulation [China RoHS declaration](#)
Product out of China RoHS scope. Substance declaration for your information.

Environmental Disclosure [Product Environmental Profile](#)

Weee The product must be disposed on European Union markets following specific waste collection and never end up in rubbish bins.

Circularity Profile No need of specific recycling operations

California Proposition 65 WARNING: This product can expose you to chemicals including: Lead and lead compounds, which is known to the State of California to cause cancer and birth defects or other reproductive harm. For more information go to www.P65Warnings.ca.gov